



TAG5000S – 4-500 kV

➔ Wireless phase comparator

STANDARD

Complying to European Directives and CE marking

USE

- Wireless phase comparator for three phase network with nominal voltages from 4 kV up to 500 kV - 50 Hz or 60 Hz (to be specified).
- Shall be used with two insulating sticks (not included) complying with the nominal voltage and having universal adaptors.

ADVANTAGES

- Light and compact units for overhead lines 4-230 kV
- Specific High-Voltage probe extensions (white) for use on 110-500 kV over-head lines
- Safety Medium-Voltage electrode extensions (grey) for use on 4-36 kV indoor use
- Positive indication for "in phase" conditions
- No hazard due to a cable link
- Increase distance of operation (more than 25m)
- Possibility of phasing through walls (inside outside)

TECHNICAL SPECIFICATIONS

Transmitter (T) : grey housing 210 mm – Ø 90 mm – 0.630 kg
Indicates the voltage presence with both visual and acoustic indications, then start to send the phase information to the receiver

Receiver (R) : blue housing 210mm – Ø 90mm – 0.630 kg
Indicates the voltage presence, and indicates "in phase" relationship with both visual and acoustic indications

Built-in testing element simulating all the functions including "out-of-phase"
HF radio transmission operating at 433.9 MHz

Minimum distance range in free air 25 m

In-door / Out-door and All weather use

Powered by two 9 V alkaline batteries (1 per module)

Specific HV probe extensions (white) for 110-500 kV over-head lines :

Approx. weight of each electrode extensions : 0.400 kg

Extension length Lu = 325 mm

Safety MV electrode extensions (grey) for 4-36 kV indoor use :

Approx. weight of each electrode extensions : 0.600 kg

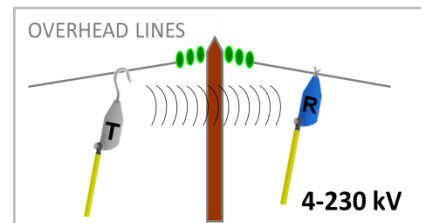
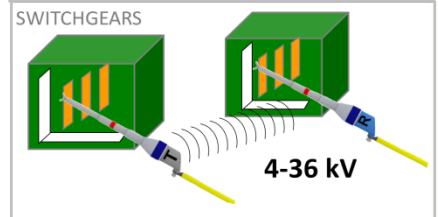
Insertion depth Ai = 260 mm

Extension length Lu = 360 mm

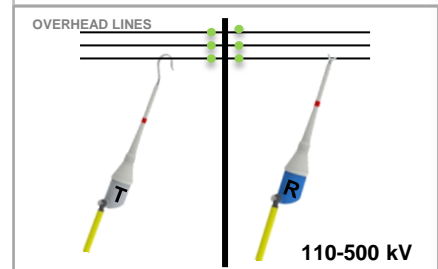
Plastic case with a set of contact electrodes (hooks, straight and V-shaped) and silicon cloth.



For use in **switchgears**, both T and R shall obligatorily be equipped with their safety electrode extension (grey).



For use on **very HV overhead lines**, both T and R shall obligatorily be equipped with their specific probe extension (white).



Reference	Frequency	Dimensions / Weight
T5KSGB04500M5	50 Hz	725 mm x 480 mm x 165 mm
T5KSGB04500M6	60 Hz	7.150 kg